

Peak Report TIC

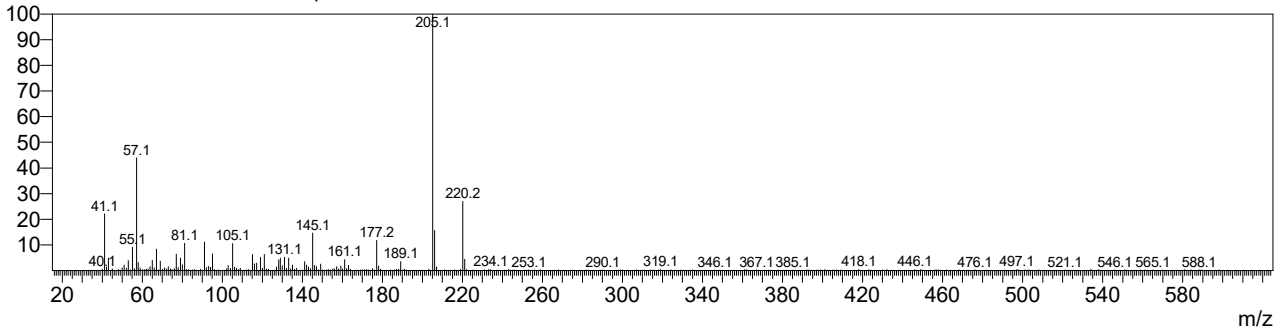
Peak#	R.Time	Height	Height%	Area	Area%
1	6.723	96407	1.83	79537	1.18
2	7.380	5153270	97.57	3618155	97.79
3	7.992	31884	0.60	70272	1.04
		5281561	100.00	3767964	100.00

Peak Report TIC

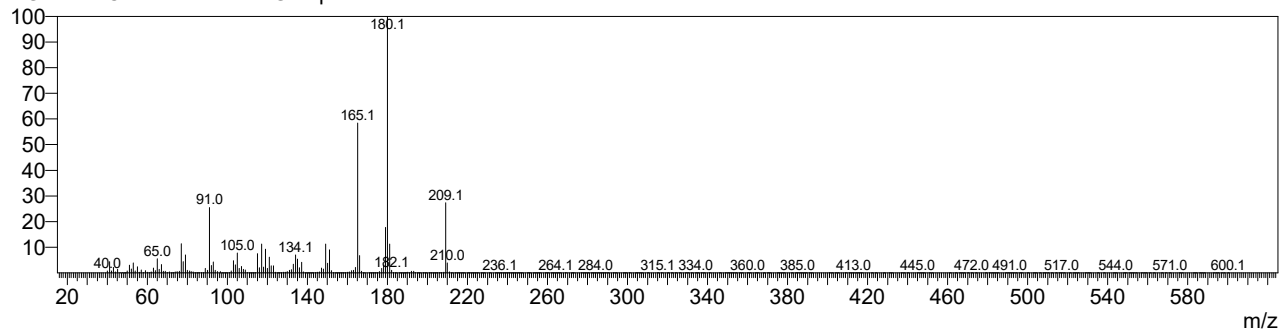
Peak#	R.Time	CAS#	Name	Similarity (%)
1	6.723	0-0-0		0
2	7.380	0-0-0	2C-E	0
3	7.992	0-0-0		0

Spectrum

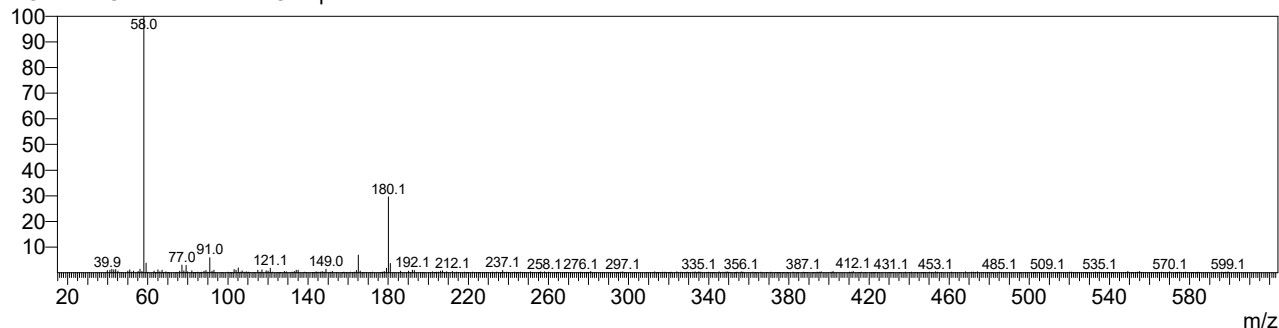
Line#:1 R.Time:6.723(Scan#:1490)
 MassPeaks:350
 RawMode:Averaged 6.720-6.725(1489-1491) BasePeak:205(20435)
 BG Mode:Calc. from Peak Group 1 - Event 1 Scan



Line#:2 R.Time:7.380(Scan#:1753)
MassPeaks:375
RawMode:Averaged 7.378-7.383(1752-1754) BasePeak:180(1101152)
BG Mode:Calc. from Peak Group 1 - Event 1 Scan



Line#:3 R.Time:7.688(Scan#:1876)
MassPeaks:320
RawMode:Averaged 7.685-7.690(1875-1877) BasePeak:58(19183)
BG Mode:Calc. from Peak Group 1 - Event 1 Scan



Line#:4 R.Time:7.993(Scan#:1998)
MassPeaks:350
RawMode:Averaged 7.990-7.995(1997-1999) BasePeak:91(1424)
BG Mode:Calc. from Peak Group 1 - Event 1 Scan

