

Peak Report TIC

Peak#	R.Time	Height	Height%	Area	Area%
1	14.167	241734	97.69	685591	97.34
2	16.275	5708	2.31	18730	2.66
		247442	100.00	704321	100.00

Peak Report TIC

Peak#	R.Time	CAS#	Name	Similarity (%)
1	14.167	0-0-0	2CB-FLY	0
2	16.275	0-0-0		0

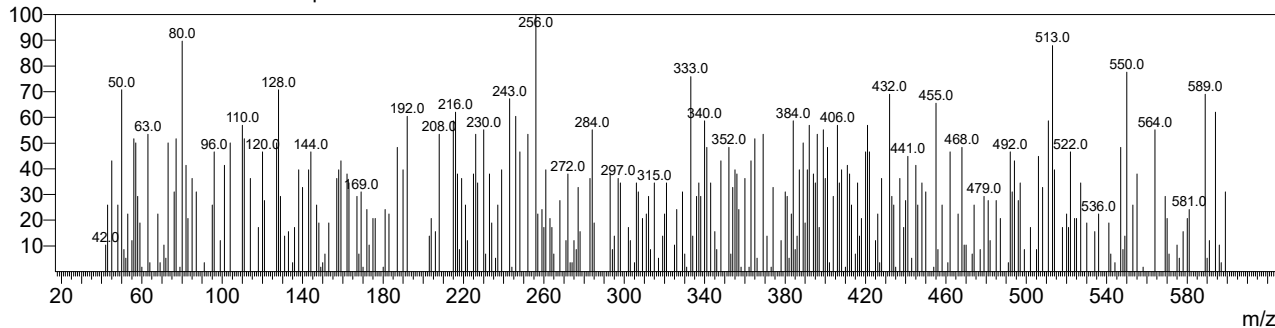
Spectrum

Line#:1 R.Time:5.155(Scan#:432)

MassPeaks:295

RawMode:Averaged 5.150-5.160(431-433) BasePeak:256(58)

BG Mode:Calc. from Peak Group 1 - Event 1 Scan

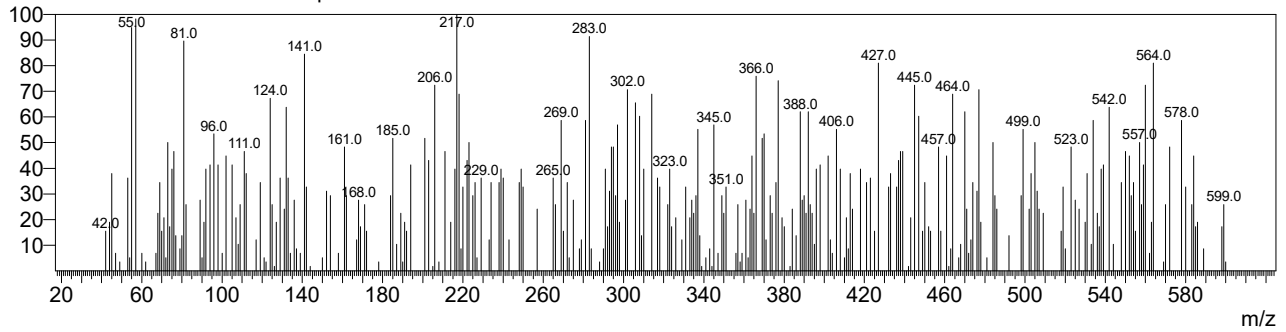


Line#:2 R.Time:6.815(Scan#:764)

MassPeaks:292

RawMode:Averaged 6.810-6.820(763-765) BasePeak:217(58)

BG Mode:Calc. from Peak Group 1 - Event 1 Scan

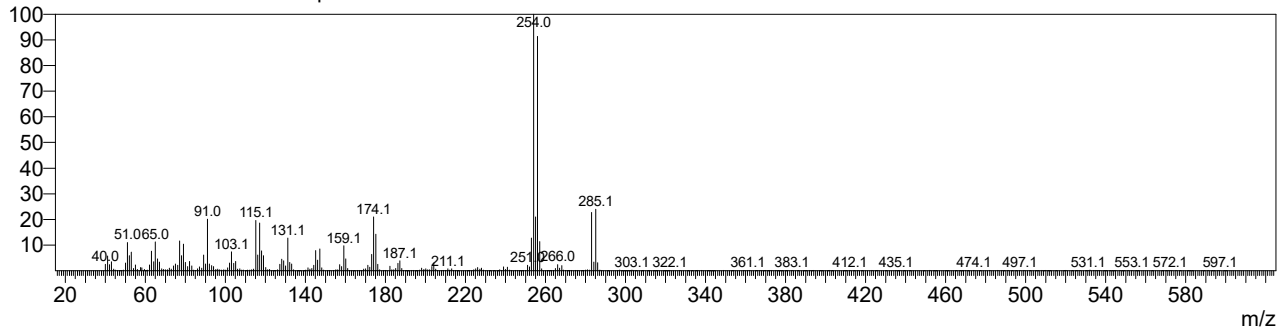


Line#:3 R.Time:14.165(Scan#:2234)

MassPeaks:386

RawMode:Averaged 14.160-14.170(2233-2235) BasePeak:254(31844)

BG Mode:Calc. from Peak Group 1 - Event 1 Scan



Line#:4 R.Time:16.275(Scan#:2656)

MassPeaks:336

RawMode:Averaged 16.270-16.280(2655-2657) BasePeak:57(94)

BG Mode:Calc. from Peak Group 1 - Event 1 Scan

