

Peak Report TIC

Peak#	R.Time	Height	Height%	Area	Area%
1	7.526	6909637	99.02	3951208	97.28
2	8.123	68039	0.98	194229	2.72
		6977676	100.00	145437	100.00

Peak Report TIC

Peak#	R.Time	CAS#	Name	Similarity (%)
1	7.526	0-0-0	alfa-Ethyl 2C-D	0
2	8.123	0-0-0		0

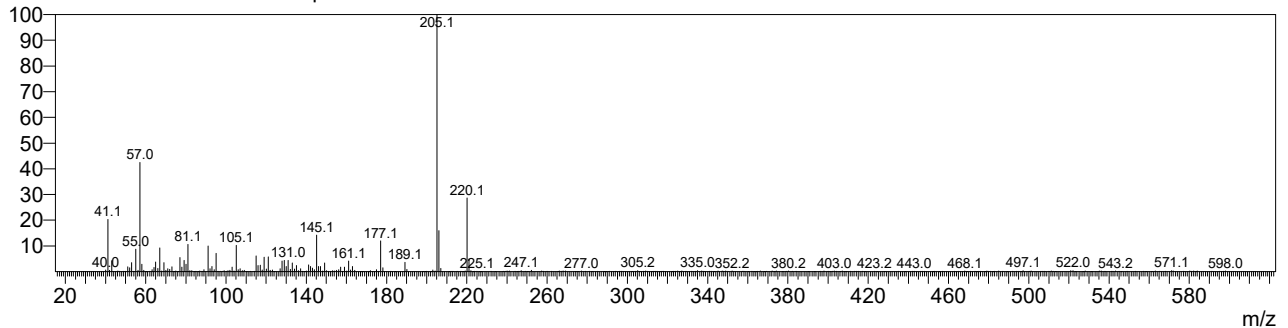
Spectrum

Line#:1 R.Time:6.702(Scan#:1482)

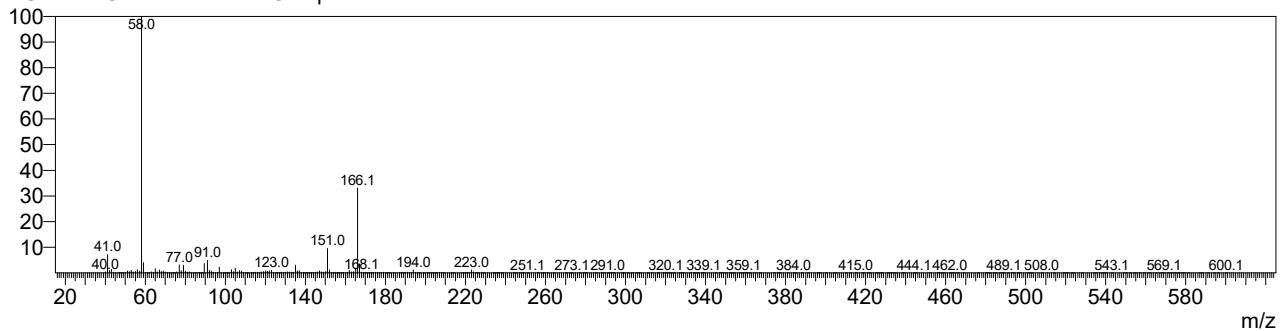
MassPeaks:339

RawMode:Averaged 6.700-6.705(1481-1483) BasePeak:205(24599)

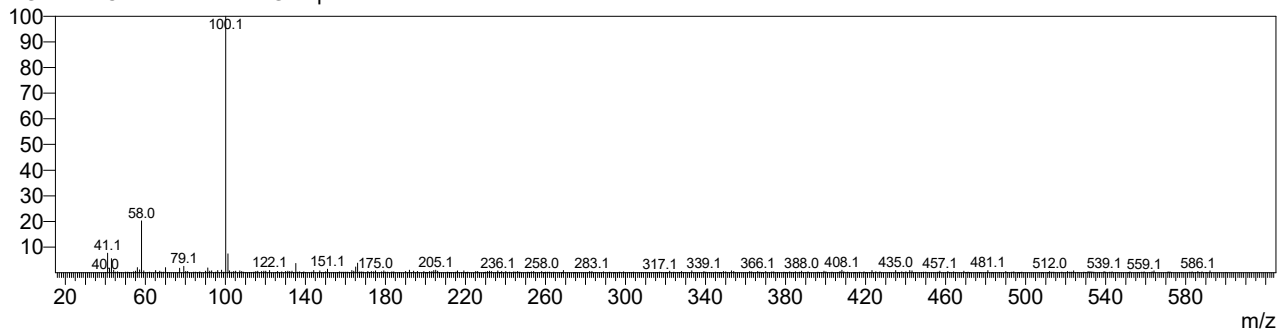
BG Mode:Calc. from Peak Group 1 - Event 1 Scan



Line#:2 R.Time:7.525(Scan#:1811)  
MassPeaks:349  
RawMode:Averaged 7.523-7.527(1810-1812) BasePeak:58(3030588)  
BG Mode:Calc. from Peak Group 1 - Event 1 Scan



Line#:3 R.Time:7.975(Scan#:1991)  
MassPeaks:322  
RawMode:Averaged 7.973-7.978(1990-1992) BasePeak:100(11325)  
BG Mode:Calc. from Peak Group 1 - Event 1 Scan



Line#:4 R.Time:8.123(Scan#:2050)  
MassPeaks:332  
RawMode:Averaged 8.120-8.125(2049-2051) BasePeak:190(4975)  
BG Mode:Calc. from Peak Group 1 - Event 1 Scan

