

Peak Report TIC

Peak#	R.Time	Height	Height%	Area	Area%
1	6.141	64846	0.95	96229	1.40
2	7.722	6773600	99.05	3800738	98.60
		6838446	100.00	3896967	100.00

Peak Report TIC

Peak#	R.Time	CAS#	Name	Similarity (%)
1	6.141	0-0-0		0
2	7.722	0-0-0		0

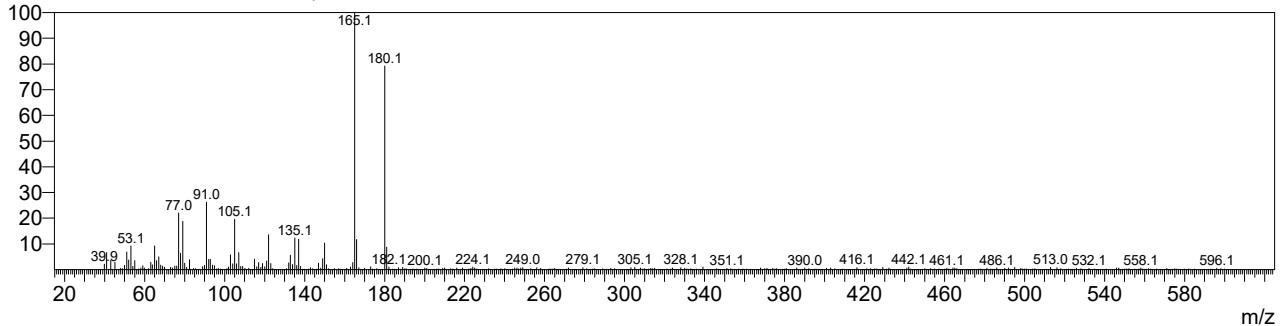
Spectrum

Line#:1 R.Time:6.143(Scan#:1258)

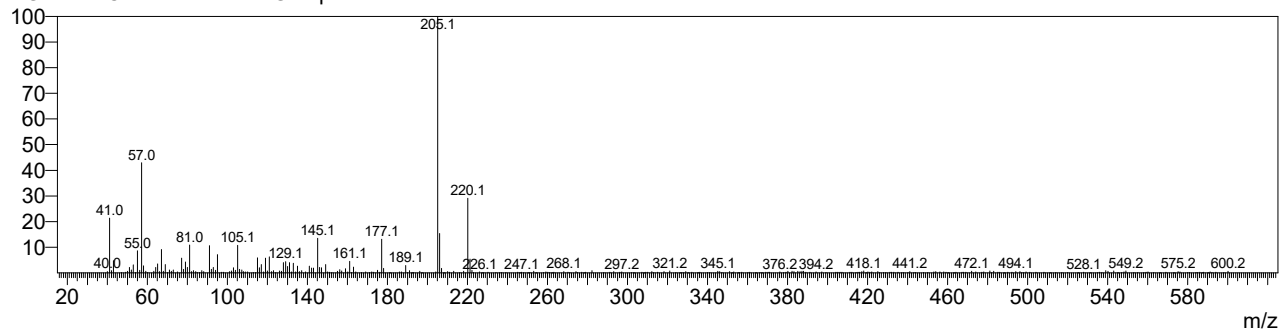
MassPeaks:349

RawMode:Averaged 6.140-6.145(1257-1259) BasePeak:165(11408)

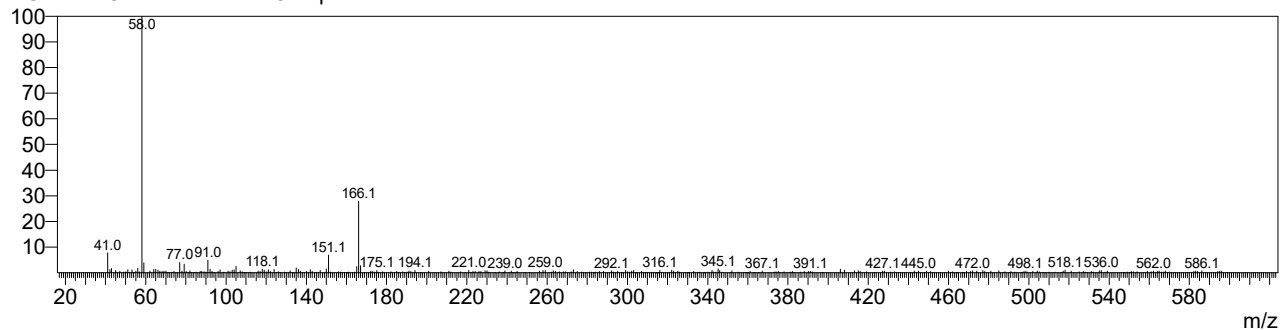
BG Mode:Calc. from Peak Group 1 - Event 1 Scan



Line#:2 R.Time:6.705(Scan#:1483)
MassPeaks:328
RawMode:Averaged 6.702-6.707(1482-1484) BasePeak:205(13585)
BG Mode:Calc. from Peak Group 1 - Event 1 Scan



Line#:3 R.Time:7.532(Scan#:1814)
MassPeaks:309
RawMode:Averaged 7.530-7.535(1813-1815) BasePeak:58(9100)
BG Mode:Calc. from Peak Group 1 - Event 1 Scan



Line#:4 R.Time:7.723(Scan#:1890)
MassPeaks:380
RawMode:Averaged 7.720-7.725(1889-1891) BasePeak:58(2858397)
BG Mode:Calc. from Peak Group 1 - Event 1 Scan

